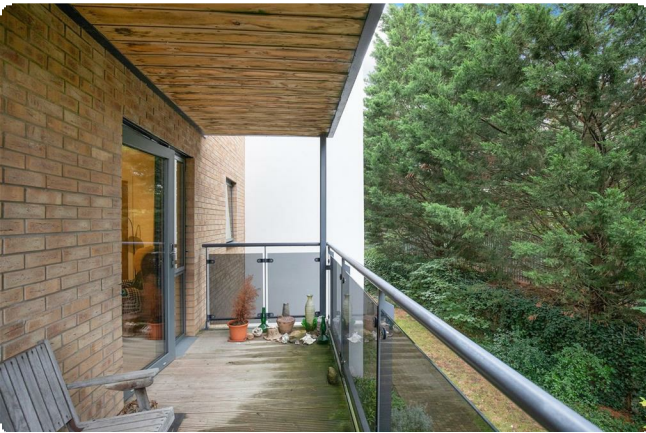
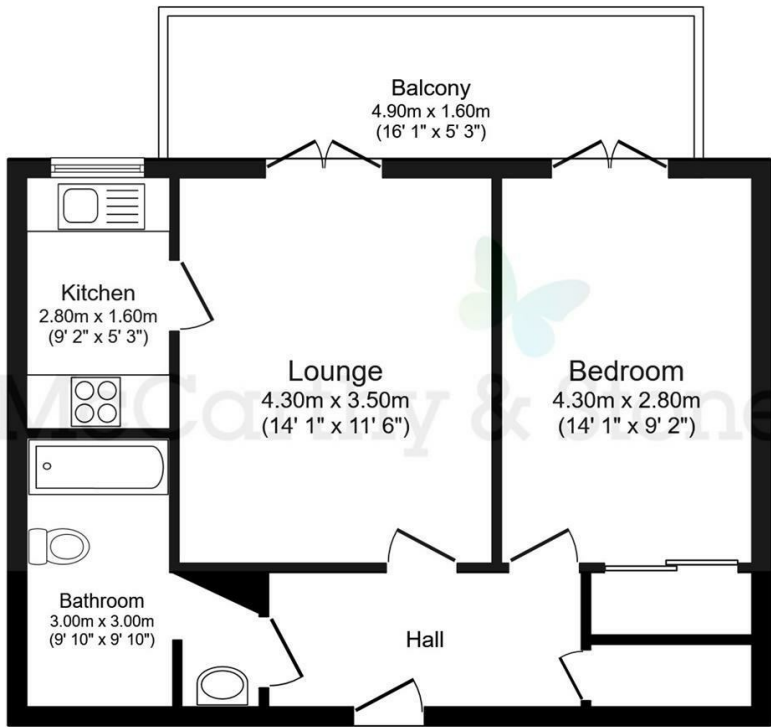


30 Jenner Court

St. Georges Road, Cheltenham, GL50 3ER



Asking price £155,000 Leasehold

ENJOY LUNCH ON US WHEN YOU TAKE A TOUR OF JENNER COURT - BOOK NOW!

~SPACIOUS one bedroom Retirement Living Plus apartment with LARGE SHELTERED BALCONY with ample room for garden furniture and array of pot plants.

Call us on 0345 556 4104 to find out more.

resales@mccarthyandstone.co.uk | mccarthyandstoneresales.co.uk

Printed Contact Details...

This plan is for illustration purposes only and may not be representative of the property. Plan not to scale.

Powered by focalagent.com

Council Tax Band: B



Energy Efficiency Rating		
	Current	Potential
Very energy efficient - lower running costs		
(92 plus) A		
(81-91) B		
(69-80) C	78	78
(55-68) D		
(39-54) E		
(21-38) F		
(1-20) G		
Not energy efficient - higher running costs		
England & Wales	EU Directive 2002/91/EC	

This floor plan is not drawn to scale and is for illustrative purposes only. Any measurements, floor areas (including any total floor area), openings and orientation are approximate and for guidance only. McCarthy Stone Resales do not take liability for any error, omission or misstatement. All parties must rely on their own inspections. It should not be assumed that any furniture or fittings contained in the photographs are included in any sale. All details referring to time and distances to localities are approximate. Details regarding any common charges and other applicable fees are provided by the seller and should not be relied on without verification and further checks made through a solicitor/conveyancer. Please contact the Property Consultant for further information that Appliances (including central heating) have not been tested, therefore it cannot be assumed that they are in good working order. All interested parties are advised to check availability and make an appointment before travelling to view the property to avoid disappointment or wasted time or travel expenses. The details contained within this brochure are for information purposes only and do not form part of any agreement. All purchases will be subject to contract terms. © All artwork (photos and floorplans) and written content are the sole property and copyright of McCarthy & Stone Resales Limited and are legally protected by UK & International copyright laws. Under no circumstance may you download, reproduce, publish or distribute any content for commercial purposes, without prior written permission from McCarthy Stone Resales. Unauthorised duplication or usage for commercial purposes is prohibited by the Copyright law and will be prosecuted.





# Jenner Court, St. Georges Road, Cheltenham, Gloucestershire, GL50 3ER

## The Apartment

An exceptional example and superbly maintained one bedroom retirement apartment set within the popular Jenner Court. The apartment is very spacious and filled with ample natural light, particularly the Living Room which is complemented by a large, floor to ceiling, double glazed window providing views over the professionally and maintained gardens.

## Entrance Hall

Front door with spy hole leads to the spacious entrance hall where the 24-hour Tunstall emergency response system is situated. From the hallway there is a door to a storage cupboard/airing cupboard. Illuminated light switches and smoke detector. Security door entry system. Doors lead to both bedrooms, living room and bathroom.

## Living Room

A double glazed door allows plenty of light into this bright and airy living room and gives access onto the large covered balcony. TV point with Sky+ connectivity (subscription fees may apply). Telephone point. Two ceiling lights. Raised electric power sockets. Partially glazed door leads to a separate kitchen.

## Kitchen

A modern fitted kitchen with a range of wall and base units with under-counter lighting. Roll edge work surfaces with tiled splash back. Integrated fridge & freezer. Built in electric oven. Ceramic four ringed hob with extractor hood above. Stainless steel sink and drainer is positioned in front of the double glazed electric window which is fitted with a roller blind.

## Bedroom

The large double bedroom has built in wardrobes with sliding mirror doors. A double glazed full height window onto the balcony. Central ceiling light. TV and telephone point. Raised power sockets. Emergency pull-cord.

## Wetroom

This purpose built wet room comprises; low level bath with grab rails; vanity unit wash hand basin with mirror over; WC, shower with fitted curtain and grab rail. Wall mounted heated towel rail. Emergency pull-cord.

## Jenner Court

Located on St George's Road, Jenner Court is less than a mile from the heart of Regency Cheltenham. There are bus stops conveniently placed just yards from the front gates, providing regular service throughout the county. Within a quarter of a mile of Jenner Court, there is a Waitrose market which also offers a home delivery service both in-store and online. Cheltenham is surrounded by well maintained gardens and the tree-lined Promenade, Cheltenham's best known avenue dating back to the 1790's, which is home to many prestigious high street shops and stores.

Jenner Court is one of McCarthy & Stone's Retirement Living PLUS range and is facilitated to provide homeowners with extra care. An Estates Manager is on hand to manage the day to day running of the development and attend to any queries you may have. Within the service charge homeowners are allocated 1 hour of domestic assistance per week, however, additional hours can be arranged by prior appointment. There is a range of personal care packages to suit your requirements; these are provided by the onsite CQC registered care agency team. For your reassurance the development has 24-Hour on-site staffing, secure camera entry systems and a 24-Hour emergency call system provided by a personal pendant with static call points in the bathroom and main bedroom.

The development also has a large, communal homeowners' lounge, fitted with audio visual equipment and WiFi. This is a superb venue for socialising with friends and family. If your guests have travelled from afar, they can extend their stay by booking into the development Guest Suite (usually for a fee of £25 per night - subject to availability) which has an en-suite shower room, tea and coffee making facilities and a TV. For added convenience there is an onsite waitress service restaurant with freshly cooked meals provided every day. Within the complex there is the added bonus of a mobility scooter room which is fitted with charging points and a laundry room. It is a condition of purchase that residents must meet the age requirement of 70 years of age or over.

## Service Charge (Breakdown)

- Cleaning of communal windows

# 1 bed | £155,000

- Water rates for communal areas and apartments
- Electricity, heating, lighting and power to communal areas
- Window Cleaning (outside only)
- 24-hour emergency call system
- Upkeep of gardens and grounds
- Repairs and maintenance to the interior and exterior communal areas
- Contingency fund including internal and external redecoration of communal areas
- Buildings insurance
- One hour of domestic support per week is included in the service charge
- Care staff on-site 24-hours a day
- Running of the on-site restaurant
- Intruder alarm system

Service charge: £9,527.38 per annum (for financial year ending 31/03/2026). The service charge does not cover external costs such as your Council Tax, electricity or TV. To find out more about service charges please contact your Property Consultant or Estates Manager.

## Parking Permit Scheme

Parking is by allocated space subject to availability. The fee is usually £250 per annum, but may vary by development. Permits are available on a first come, first served basis. Please check with the House Manager on site for availability.

## Lease Information

Lease Length: 125 Years from 1st June 2013  
Ground rent: £435 per annum  
Ground rent review: 1st June 2028  
Managed by: McCarthy and Stone Management Services

## Additional Information & Services

- Superfast Fibre Broadband available
- Mains water and electricity
- Electric room heating
- Mains drainage

